

PROPRIETARY INFORMATION:

PROPRIETARY OF GLOBTEK, INC. ANY REPRODUCTION, DISCLOSURE OR USE OF THIS DRAWING, IN WHOLE OR IN PART, IS HEREBY PROHIBITED EXCEPT AS SPECIFIED IN WRITING BY GLOBTEK, INC.

REVISION HISTORY

REV	DESCRIPTION	SALES	RFS	DATE	APPROVED
A	INITIAL RELEASE	JS	25559	6/18/2014	HM
B	CHANGE TO "RECOMMENDED CHARGER SPECIFICATION", MAX. VOLTAGE TOLERANC	JS	25907	5/12/2015	HM
	MECHANICAL SIZE: FROM 185.5*69.5*7.9 mm TO SIZE: 183.5*69.5*7.9 mm				
	ADDED LABEL WITH DIMENSIONS, ADDED ANTISTATIC TAP AND FULL TAP				
	ADDED PACKING DIMENSIONS FOR GIFT BOX AND CARTON				
C	ADDED NOTE TO TAPE POSITIVE BATTERY CELL ELECTRODE.	MK	26594	12/16/2016	BS
	ADDED REV. TO BATTERY LABEL				
D	ADD IMAGING OF THE EXTRA TAPE ON THE POSITIVE ELECTRODE	MK	26613	1/3/2017	MK
E	CORRECT TYPO ERROR ON THE PINOUT: PIN 5 TO I2C SDA & PIN 6 TO I2C SCL	NF	26635	1/25/2017	MK
E1	CLARIFY BATTERY DIMENSIONS 183.5*66.5*7.9 mm	NF	26813	6/28/2017	MK
E2	REMOVE 'REV.C' FROM THE LABEL. CHANGE '201412' ON LABEL SPEC TO 'YYMM'	NF	26949	11/3/2017	MK
F	ADD BARCODE TO LABEL	NF	26997	1/19/2018	MK
F2	ADD WEIGHT	DR		9/10/2020	DR
F3	UPDATE OUTLINE,PACKING AND LABEL DRAWING	DR		9/2/2022	DR
	Maximum Discharge Current from 2.5A to 0.3C				
	Minimum Discharge Voltage from 2.4V to 3V				
	Internal Impedance from 85milli Ohms to 180 milli Ohms				
	Fuel Gauge IC Used from BQ27200 to BQ27542, Add Charging Rate 0.2C				
	Overcharge Voltage from 4.3V to 4.28±0.025V				
	Overdischarge Voltage from 2.75 to 3±0.05V, Over current protection 5~12A				
	Storage Temperature and Charge Retention, Humidity 60 +/- 20% Relative Humidity				
F4	Update Rated Capacity from 9400mAh to 9100mAh, Watt-Hour Rating rom 34.78 to 33.67	MK	27792	4/27/2023	DR
F5	Update packing: Qty from 42pcs to 48pcs, outer carton size to 280*220*230mm	MK	27810	8/10/2023	DR

 GlobTek, Inc.
www.globtek.com

186 Veterans Drive, Northvale, NJ 07467
Tel. 201-784-1000 Fax 201-784-0111

Drawing Title: 1S5P Lithium-Ion Polymer Battery Pack with Built-in
PCM, NTC(10K), Fuel Gauge, 5Cells, 3.7Volts@9400mAh

MODEL NO: GT683566

PART NO: BL1880F6835661S5PG9T

REV F5

PROPRIETARY INFORMATION:

PROPRIETARY OF GLOBTEK, INC. ANY REPRODUCTION, DISCLOSURE OR USE OF THIS DRAWING, IN WHOLE OR IN PART, IS HEREBY PROHIBITED EXCEPT AS SPECIFIED IN WRITING BY GLOBTEK, INC.

By customer signing or accepting this document, they agree to acknowledge and accept the **Guidelines and cautions, Safety Notes, and Safety Precautions published on GlobTek's website** http://en.globtek.com/safety-cautions.php#.UUD-NRzU_I8

GlobTek offers a 5-year warranty on workmanship and electrical components assembly on all new battery pack products excluding t the battery cells themselves which are covered by the Manufacturer's original warranty at their published warranty period. Please refer to the manufacturer's warranty policy for cells. For GlobTek brand cells, GlobTek provides a 12-month warranty for Li-Ion batteries. The warranty period is based upon the expectation that the battery will deliver 80% of its initial capacity after 300 cycles at low to moderate power loads. High power loads may cause a battery to reach 80% of initial capacity in less than the 12-month warranty period. Li-Ion batteries will continue to operate below the 80% capacity threshold; however, the capacity (run time) delivered between charges will continue to decrease.

The purchaser of GlobTek battery pack products (Customer) agrees that they are a "Sophisticated user" who understands battery technology and that it is their sole responsibility to determine suitability of the product described for their application and to take precaution for protection against any hazards attendant to the handling and use of the product. GlobTek products are only designed for professional use and integration by companies into their products and may not be used by consumers directly. GlobTek provides batteries and battery packs as a component of an end system.

The acceptance of GlobTek specifications, the information on this page and use of the product(s) described in this or other GlobTek documents indicate that the product was qualified for use (tested and/or sample waiver signed), and the acceptance and binding of the customer to GlobTek terms and conditions, which supersede all other agreements, terms and conditions. <https://en.globtek.com/about/terms-and-conditions>

Lithium Ion batteries are inherently dangerous. Continuous usage or charging without allowing the battery to discha
FIRE HAZARD: This like all Li-Ion battery packs must be regularly discharged and charged.
it is not recommended to be kept on permanent full charge and in a full state of charge.

Customer Approval of Specification:

Please approve, sign and send back to GlobTek so we can complete order processing.
A delay in receipt of this form will delay delivery schedule.

Company Name:

Customer P/N:

Quote Number:

Date:

Authorized Representative Name:

Authorized Representative Signature:


Foot Note:

Globtek Inc. will not be liable for the safety and performance of these power supplies if unauthorized access and repair occurs. End user should consult applicable UL, CSA or EN standards for proper installation instruction.

Limitation of Use:

Globtek product are not authorized for use as mission critical components in life support hazardous environment, nuclear or aircraft applications without prior written approval from the CEO of Globtek Inc.

Contents of this document are subject to change without prior notice

 GlobTek, Inc. www.globtek.com	Drawing Title: 1S5P Lithium-Ion Polymer Battery Pack with Built-in PCM, NTC(10K), Fuel Gauge, 5Cells, 3.7Volts@9400mAh	
	MODEL NO: GT683566	REV F5
186 Veterans Drive, Northvale, NJ 07467 Tel. 201-784-1000 Fax 201-784-0111	PART NO: BL1880F6835661S5PG9T	

PROPRIETARY INFORMATION:

PROPRIETARY OF GLOBTEK, INC. ANY REPRODUCTION, DISCLOSURE OR USE OF THIS DRAWING, IN WHOLE OR IN PART, IS HEREBY PROHIBITED EXCEPT AS SPECIFIED IN WRITING BY GLOBTEK, INC.



DIMENSIONS ARE IN MM UNLESS SPECIFIED OTHERWISE.

1. ELECTRICAL SPECIFICATIONS:

Rated Capacity	9100	mAh Minimum
Nominal Voltage	3.7	Volts
Watt-Hour Rating	33.67	Watt Hour

2. GENERAL SPECIFICATIONS:

Cell Brand	GlobTek	
Cell Size	6.8*35*66 mm	
Cell Configuration	1S5P	
Thermistor (NTC) Inside Pack	10K	
Maximum Discharge Current	0.3C	
Minimum Discharge Voltage	3	Volts
Internal Impedance	≤180	milli Ohms
Protection Module	Bult-in inside the battery pack	
Pack ID	None	
Fuel Gauge IC Used	BQ27542	
Fuel Gauge Data Access Method	I2C	

3. RECOMENDED CHARGER SPECIFICATIONS:

Charger Circuit	EXTERNAL
Charging Method	Constant Current 0.2C and Constant Voltage 4.20V, 0.02C cut-off
Charge Termination Method	Minimum Charge Current and Safety Timer as back-up

Charging Rate	0.2C	
Charging Time (Approximate)	5.5~6.0	Hours
Max. Charging Voltage	4.2V	plus/minus +0%, -2%

4. Protection

Overcharge Voltage	4.28±0.025V
Overdischarge Voltage	3±0.05V
Over current protecion	5~12A

5. AMBIENT CONDITIONS:

Ambient Temperature During Charging	0°C to +45°C
Ambient Temperature During Discharging	-20°C to +60°C
Storage Temperature and Charge Retention	1 Year at -10°C to +25°C; >85%
	6Months at -10°C to +45°C; >85%
	1 Month at -10°C to +55°C; >90%
Humidity	60 +/- 20% Relative Humidity

PROPRIETARY INFORMATION:

PROPRIETARY OF GLOBTEK, INC. ANY REPRODUCTION, DISCLOSURE OR USE OF THIS DRAWING, IN WHOLE OR IN PART, IS HEREBY PROHIBITED EXCEPT AS SPECIFIED IN WRITING BY GLOBTEK, INC.

6. REGULATORY APPROVALS

Cells Approved To
Pack Approved To
ROHS
Transportation

Designed to meet UL 1642
Designed to meet UL 2054, IEC 62133
Complies with EU 2002/95/EC and China SJ/T 11363-2006
Designed to meet UN 38.3

7. WARRANTY

Warranty

5 years warranty on the battery pack excluding the cells themselves which are covered by the Manufacturer's original warranty at their published warranty period. Please refer to the manufacturer's warranty policy for cells.

 GlobTek, Inc.
www.globtek.com

186 Veterans Drive, Northvale, NJ 07467
Tel. 201-784-1000 Fax 201-784-0111

Drawing Title: 1S5P Lithium-Ion Polymer Battery Pack with Built-in
PCM, NTC(10K), Fuel Gauge, 5Cells, 3.7Volts@9400mAh

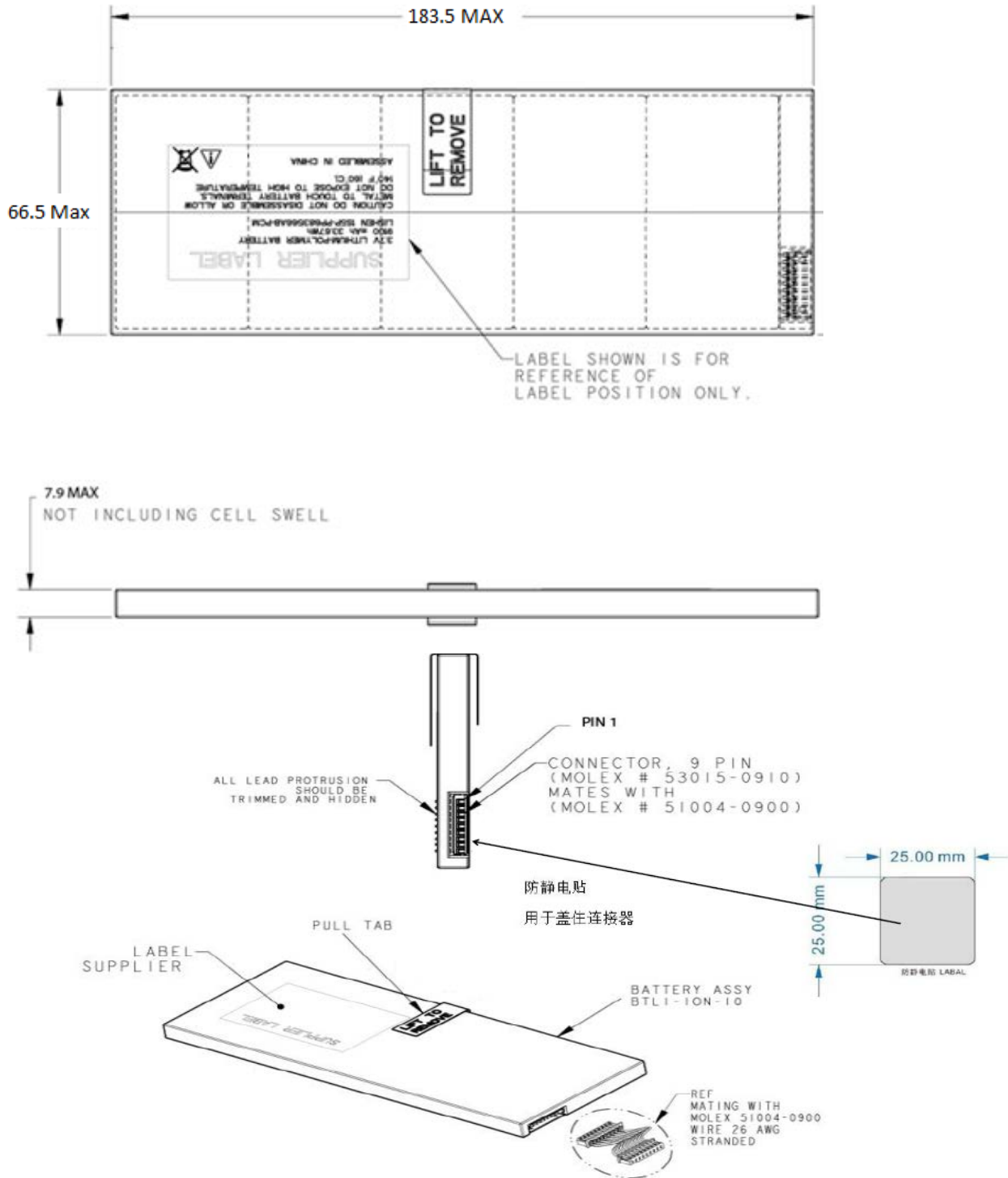
MODEL NO: GT683566

PART NO: BL1880F6835661S5PG9T

REV F5

8. MECHANICAL

WRAP WITH BLACK POLYESTER FILM, 3M 1353 OR EQUIVALENT
SIZE: 183.5*66.5*7.9 mm



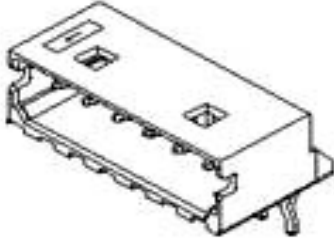
WEIGHT: APROX 250g

PROPRIETARY INFORMATION:

PROPRIETARY OF GLOBTEK, INC. ANY REPRODUCTION, DISCLOSURE OR USE OF THIS DRAWING, IN WHOLE OR IN PART, IS HEREBY PROHIBITED EXCEPT AS SPECIFIED IN WRITING BY GLOBTEK, INC.

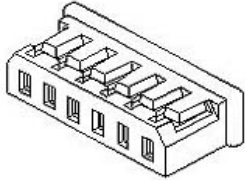
9. OUTPUT CORD AND CONNECTOR:

ACTUAL CONNECTOR'S, OVERMOLDS, FERRITES, MAY VARY SLIGHTLY FROM THE PICTURE BELOW



	Equivalent	Y/N	
Cable Type			
Cable Length			
Wire gauge			26AWG
Connector		Y	Molex 9P Header: 53015-0910
			N/A
Pin Assignment			Pin 1: POS
			Pin 2: POS
			Pin 3: POS
			Pin 4: THERM
			Pin 5: I2C SDA
			Pin 6: I2C SCL
			Pin 7: NEG
			Pin 8: NEG
			Pin 9: NEG
Other requirements			N/A

MATES WITH MOLEX 51004-0900 CRIMP HOUSING



FRONT VIEW

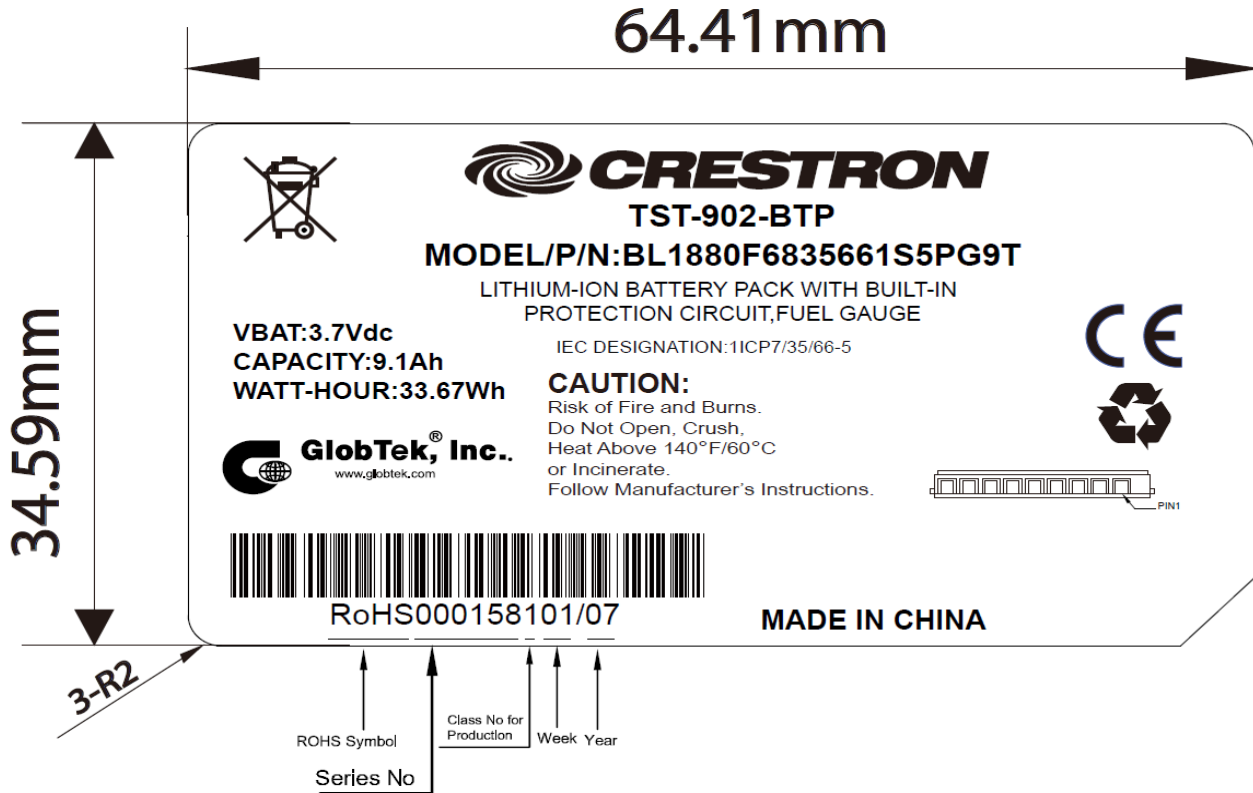


PROPRIETARY INFORMATION:

PROPRIETARY OF GLOBTEK, INC. ANY REPRODUCTION, DISCLOSURE OR USE OF THIS DRAWING, IN WHOLE OR IN PART, IS HEREBY PROHIBITED EXCEPT AS SPECIFIED IN WRITING BY GLOBTEK, INC.

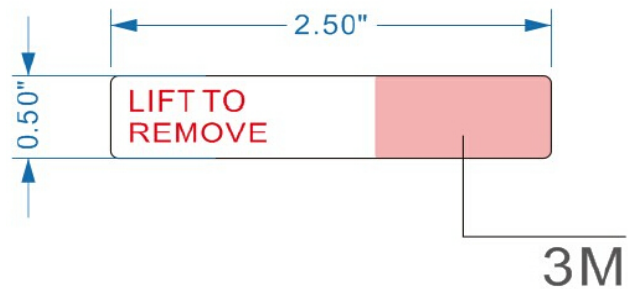
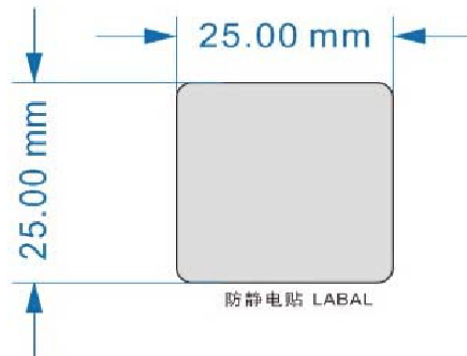
10. LABEL:

MATERIAL: FLAT THERMAL TRANSFER, IMPRINTABLE, POLYESTER SHEET
 BACKGROUND COLOR: WHITE OR SILVER
 TEXT COLOR: BLACK
 LABEL WIDTH: (mm) 64.41
 LABEL HEIGHT: (mm) 34.59



Antistatic Tap for covering the connector

Pull Tape



CAUTION:

1. MAY EXPLODE IF DISPOSED OF IN FIRE.
2. USE SPECIFIED POWER SUPPLY ONLY.
3. DO NOT SHORT CIRCUIT.

GlobTek, Inc.
www.globtek.com

186 Veterans Drive, Northvale, NJ 07467
 Tel. 201-784-1000 Fax 201-784-0111

Drawing Title: 1S5P Lithium-Ion Polymer Battery Pack with Built-in PCM, NTC(10K), Fuel Gauge, 5Cells, 3.7Volts@9400mAh

MODEL NO: GT683566

PART NO: BL1880F6835661S5PG9T

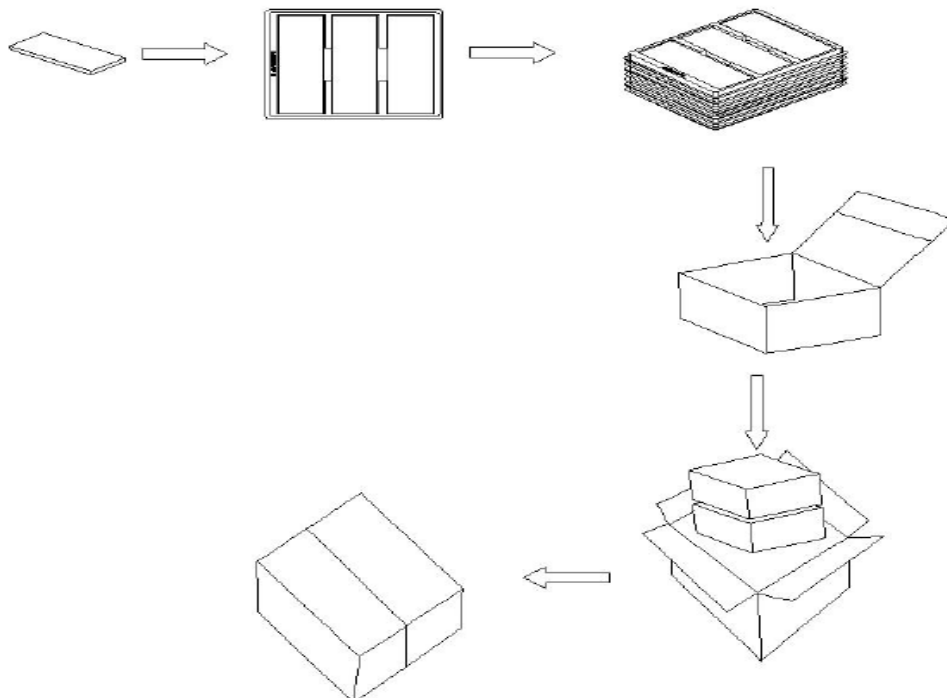
REV F5

PROPRIETARY INFORMATION:

PROPRIETARY OF GLOBTEK, INC. ANY REPRODUCTION, DISCLOSURE OR USE OF THIS DRAWING, IN WHOLE OR IN PART, IS HEREBY PROHIBITED EXCEPT AS SPECIFIED IN WRITING BY GLOBTEK, INC.

11. PACKING

INNER CARTON SIZE	270*210*100
OUTER CARTON SIZE:	280*220*230
QUANTITY PER CARTON:	48
G.W.	10.0 kg



GlobTek® Inc.

www.globtek.com

186 Veterans Drive, Northvale, NJ 07467

Tel. 201-784-1000 Fax 201-784-0111

Drawing Title: 1S5P Lithium-Ion Polymer Battery Pack with Built-in PCM, NTC(10K), Fuel Gauge, 5Cells, 3.7Volts@9400mAh

MODEL NO: GT683566

PART NO: BL1880F6835661S5PG9T

REV F5