

Model:GTM91120-30VV-FW (PCB Mounted)

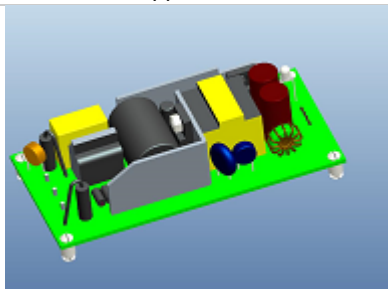
May 9, 2025

GTM91120-30VV-FW (PCB Mounted)

Information

| | |
|--------------|---|
| Model Number | GTM91120-30VV-FW (PCB Mounted) |
| Description | GTM91120-30VV-FW (PCB Mounted), Medical Power Supply, 60601-1-4th Ed. , Open Frame/Internal, Regulated Switchmode AC-DC Power Supply AC Adaptor, , Input Rating: 100-240V~, 50-60 Hz, Solder Pins for Line & Neutral, 1.4 mm square pins, 4.5 mm long, Output Rating: 30 Watts, Power rating with convection cooling (W) , 5-48V in 0.1V increments, Approvals: UKCA; RCM; ETL 62368; LPS 62368; ETL; CB 60335; |

Model Picture



| | |
|-------------------------------|---|
| Agency Documents | http://www.globtek.info/certs/GTM91120-T2%20-T3A%20-FW/ |
| CE EC-Declaration | https://www.globtek.com/pdf/ec_declaration/a00a000000JsPaEAL |
| RoHS/RoHS2 Declaration | https://www.globtek.com/pdf/rohs_cert/a00a000000JsPaEAL |
| REACH Declaration | https://www.globtek.com/pdf/iso_certificates/REACH.pdf |
| Conflict Minerals Declaration | https://www.globtek.com/pdf/conflict-minerals.pdf |

Delivering leading edge, innovative power solutions for more than 30 years....

Model:GTM91120-30VV-FW (PCB Mounted)

May 9, 2025

MODEL PARAMETERS

| | |
|--------------------|--|
| Type | Open Frame/Internal |
| Technology | Regulated Switchmode AC-DC Power Supply AC Adaptor |
| Category | Medical Power Supply |
| Input Voltage | 100-240V~, 50-60 Hz |
| I/P Amps (A) | 1.5A |
| Wattage (W) | 30.0 |
| Vout Range (V) | 5-48 |
| Efficiency Level | V |
| Ingress Protection | |
| Size (mm) | 101.6x50.8x22.30 |

PROPRIETARY INFORMATION

PROPRIETARY OF GLOBTEK, INC. ANY REPRODUCTION, DISCLOSURE OR USE OF THIS DRAWING, IN WHOLE OR IN PART, IS HEREBY PROHIBITED EXCEPT AS SPECIFIED IN WRITING BY GLOBTEK, INC.

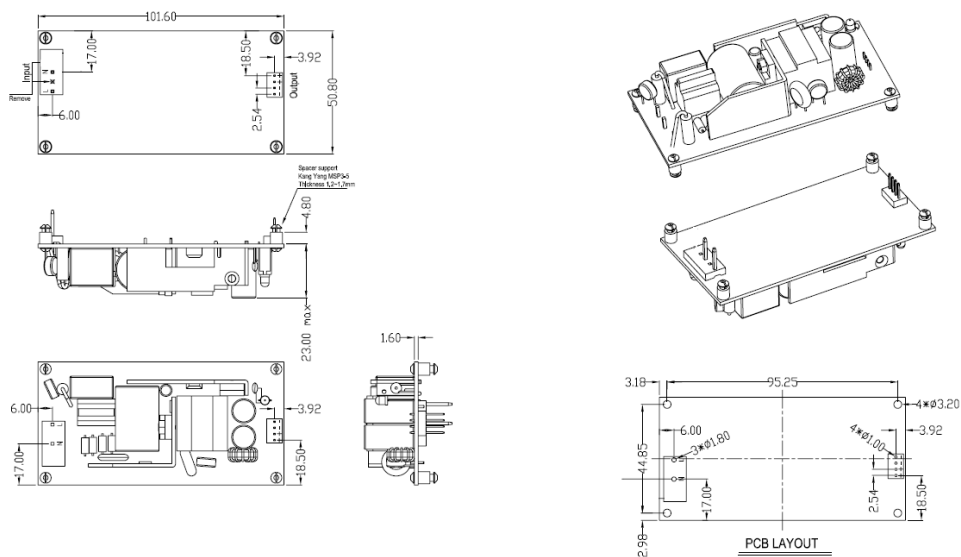
<https://www.globtek.com/ds/eNuad5LT4in/vgSQ6zBdCdQ.html#datasheet>

Delivering leading edge, innovative power solutions for more than 30 years....

Model: GTM91120-30VV-FW (PCB Mounted)

May 9, 2025

ENCLOSURE



Delivering leading edge, innovative power solutions for more than **30** years....

Model:GTM91120-30VV-FW (PCB Mounted)

May 9, 2025

RATING TABLE

| Model Number | Voltage | Amps(A) | Watts(W) | RFQ |
|--------------|---------|---------|----------|-----|
|--------------|---------|---------|----------|-----|

PROPRIETARY INFORMATION

PROPRIETARY OF GLOBTEK, INC. ANY REPRODUCTION, DISCLOSURE OR USE OF THIS DRAWING, IN WHOLE OR IN PART, IS HEREBY PROHIBITED EXCEPT AS SPECIFIED IN WRITING BY GLOBTEK, INC.

<https://www.globtek.com/ds/eNuad5LT4in/vgSQ6zBdCdQ.html#datasheet>

SPECIFICATIONS

1. ELECTRICAL SPECIFICATIONS:

1. Input Voltage: 100-240 Vac
2. Input Current: 1.5 A RMS max
3. Input Frequency: 47 - 63 Hz
4. Output power (rated): 30Watts max

Note: Refer to Power Supply information on page 2 for the corresponding rated output power for the specific output voltage.

5. Output Regulation: +/- 5% measured at the output connector
6. Line Voltage Regulation: +/- 2% typical measured at full load
7. Output Ripple (Vp-p): +/-2% maximum, measured at 20 MHz bandwidth with 0.1 uf ceramic capacitor in parallel with 10 uf electrolytic capacitor connected at the end of the output connector at nominal line
Optional low ripple option available (RFP4579)
8. Turn-ON/OFF Overshoot: 5% maximum, 500uS typical recovery time for 25% to 50% step load
9. Turn-ON Delay: 3 Seconds, maximum @ full load, nominal line
10. Hold-Up Time: 8mS typical @ nominal input voltage and full load
11. Inrush Current: 60A maximum cold start @ 240Vac input
12. Switching Frequency: 100 KHz typical

B) PROTECTION

1. Over-Voltage: Protected with a Zener diode clamp across the output
2. Short Circuit: Hiccup with auto recovery
3. Over-load: Hiccup with auto recovery
4. Input Protection: Input line and neutral fusing

C) SAFETY

1. Dielectric Withstand Voltage: 5656Vdc from primary to secondary
2. Warning to service personnel "CAUTION: Double pole/neutral fusing". This marking is required only for both F1 and F2 installed
3. Earth Leakage Current: <100 uA at 240Vac input voltage
4. MTBF: 200,000 hours @ 25°C ambient temperature
5. Operating Temperature: 0°C to 40°C ambient temperature

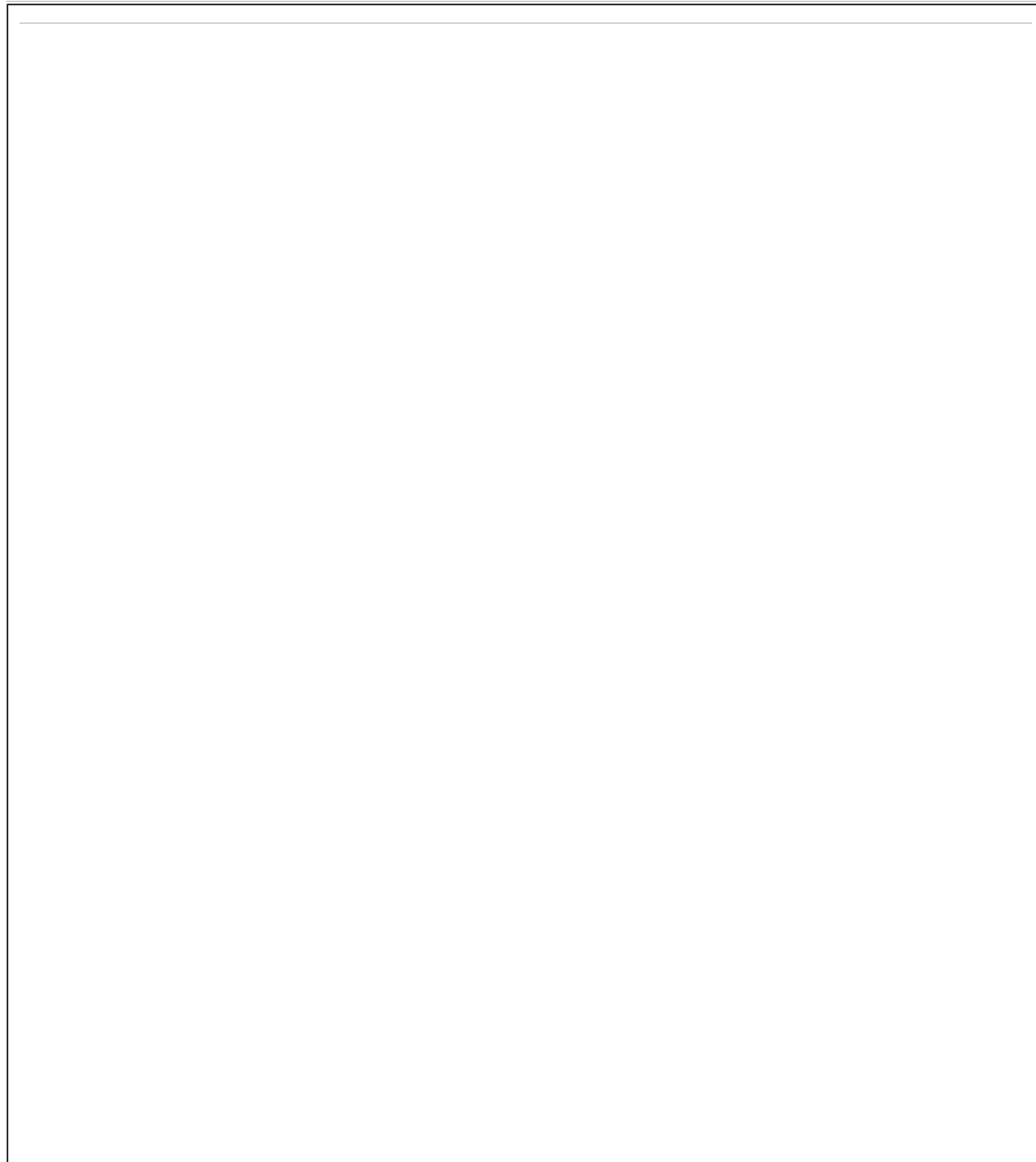
D) OTHER:

1. MTBF: 200,000 Hours @ 25°C ambient temperature
2. Humidity: 0% to 90% relative humidity
3. Storage Temperature: -10°C to 80°C
4. Cooling: Convection

Delivering leading edge, innovative power solutions for more than **30** years....

Model:GTM91120-30VV-FW (PCB Mounted)

May 9, 2025



PROPRIETARY INFORMATION

PROPRIETARY OF GLOBTEK, INC. ANY REPRODUCTION, DISCLOSURE OR USE OF THIS DRAWING, IN WHOLE OR IN PART, IS HEREBY PROHIBITED EXCEPT AS SPECIFIED IN WRITING BY GLOBTEK, INC.

<https://www.globtek.com/ds/eNuad5LT4in/vgSQ6zBdCdQ.html#datasheet>

Delivering leading edge, innovative power solutions for more than **30** years....

Model:GTM91120-30VV-FW (PCB Mounted)

May 9, 2025

DERATING CURVE

Delivering leading edge, innovative power solutions for more than **30** years....

Model:GTM91120-30VV-FW (PCB Mounted)

May 9, 2025

INPUT CONFIGURATION

| Description | Solder Pins for Line & Neutral, 1.4 mm square pins, 4.5 mm long |
|-------------|---|
|-------------|---|

PROPRIETARY INFORMATION

PROPRIETARY OF GLOBTEK, INC. ANY REPRODUCTION, DISCLOSURE OR USE OF THIS DRAWING, IN WHOLE OR IN PART, IS HEREBY PROHIBITED EXCEPT AS SPECIFIED IN WRITING BY GLOBTEK, INC.





<https://www.globtek.com/ds/eNuad5LT4in/vgSQ6zBdCdQ.html#datasheet>

Delivering leading edge, innovative power solutions for more than 30 years....

Model:GTM91120-30VV-FW (PCB Mounted)

May 9, 2025

Approvals

| Logo | Description |
|--|--|
| No Logo Applicable | IEC 60335-1:2010 (Fifth Edition) incl. Corr. 1:2010 and Corr. 2:2011 + A1:2013 |
|  | Audio/Video, Information And Communication Technology Equipment - Part 1: Safety Requirements [UL 62368-1:2014 Ed.2] Audio/Video, Information And Communication Technology Equipment - Part 1: Safety Requirements [CSA C22.2#62368-1:2014 Ed.2] |
|  | AAMI ES60601-1:2005 +A1 - Medical Electrical Equipment - Part 1: General Requirements CAN/CSA-C22.2 No.60601-1:14, Third Edition Issued: 2014/03/01 - Medical Electrical Equipment - Part 1 IEC 60601-1-11 Issued: 2015/01/20 Ed. 2 Medical Elec. Equip. |
| LPS | Limited Power Source 62368 |
|  GMA-515496-EA | RCM certificate GMA-515958-EA; Australia and New Zealand Regulatory Compliance, Mark (http://rcm.standards.org.au/rcmfaq/rcmfaq.htm) |
|  | UKCA Certification |