



ISO 9001:2008
REGISTERED

GT-41076 SERIES-6W



6 Watts, Wall Plug-In, Switchmode Power Supply, N.A.,
European, U.K., SAA Universal Input, ITE, Class II, Level V



ELECTRICAL SPECIFICATIONS

INPUT VOLTAGE:

90-264 VAC

INPUT CURRENT:

< 0.3 A RMS MAX

INPUT FREQUENCY:

47-63 HZ

OUTPUT VOLTAGE:

SEE TABLE BELOW

OUTPUT CURRENT:

NO LOAD TO FULL LOAD, NO MINIMUM LOAD REQUIRED

OUTPUT POWER (RATED):

6 WATTS MAX

OUTPUT LOAD REGULATION:

+/- 5% MEASURED AT O/P CONNECTOR

LINE VOLTAGE REGULATION:

+/- 1% TYPICAL MEASURED AT THE OUTPUT CONNECTOR

OUTPUT RIPPLE (PEAK TO PEAK):

1% OR 50 mV WHICHEVER IS GREATER. MEASURED AT 20 MHz BANDWIDTH WITH 0.1 µf CERAMIC CAPACITOR IN PARALLEL WITH 10 µf ELECTROLYTIC CAPACITOR CONNECTED AT THE END OF OUTPUT CONNECTOR AT NOMINAL LINE

TURN-ON/TURN-OFF OVERSHOOT:

± 5% MAX 500µS MAX RECOVERY TIME FOR 25% STEP LOAD

TURN-ON DELAY:

3000 mSEC MAX

HOLD-UP TIME:

8 mSEC MIN AT NOMINAL INPUT AND FULL LOAD

INRUSH CURRENT:

30 A MAX AT COLD START 115 VAC, 60A MAX COLD START 230VAC

SWITCHING FREQUENCY:

66.5 KHz TYPICAL

PROTECTION

OVER-VOLTAGE:

PROTECTED, UNIT WILL AUTORECOVER UPON REMOVAL OF FAULT

SHORT CIRCUIT:

PROTECTED. UNIT WILL AUTORECOVER UPON REMOVAL OF FAULT

INPUT:

INPUT LINE FUSING

SAFETY:

DIELECTRIC WITHSTAND VOLTAGE:

4242 VDC FROM PRIMARY TO SECONDARY

EARTH LEAKAGE:

<300 µA AT 240 VAC

APPROVALS

SAFETY DOCUMENTS ARE AVAILABLE ONLINE BY CLICKING THIS LINK.

SAFETY APPROVAL:

UL60950-1, CUL TO 22.2 #60950-1, SIQ TO EN60950-1 2ND EDITION, CCC TO GB4943-2001, GB9254-1998, GB17625.12003, GOST-R CE CLASS II, AS/NZ TO 60950, C-TICK TO 55022, PSE TO J60950, CB REPORT, NRCAN

EMI:

COMPLIES WITH EN55022 CLASS B AND FCC PART 15 CLASS B, VCCI WHEN TESTED WITH RESISTIVE LOAD, BOTH CONDUCTED AND RADIATED EMI

CE MARK:

TESTED TO COMPLY WITH EN55022:2006/A1:2007 Class B, EN610003-2, EN610003-3 INCLUDING EN61000-4-2, EN61000-4-3, EN61000-4-4, EN61000-4-5, EN61000-4-6N EN61000-4-11

C-TICK:

TESTED TO COMPLY WITH AUSTRALIA SECTION 182 OF THE RADIO COMMUNICATION ACT OF 1992.

EFFICIENCY:

COMPLIES TO SECTION 301 OF ENERGY INDEPENDENCE AND SECURITY ACT (EISA), COMPLIES WITH ENERGY STAR TIER 2 (NORTH AMERICA), CECP TIER 2 (CHINA), MEPS TIER 2 (AUSTRALIA), CODE OF CONDUCT (EUROPE) 5.1 ~ 6.9V WITH 1000 mm CABLE ONLY

OTHERS

MTBF:

200,000 HOURS AT 25°C AMBIENT TEMPERATURE

OPERATING TEMPERATURE:

0°C TO 40° C

HUMIDITY:

0% TO 90% RELATIVE HUMIDITY

STORAGE TEMPERATURE:

-40°C TO 80° C

RoHS:

COMPLIES WITH EU 2002/95/EC AND CHINA SO/T 11363-2006

OUTPUT VOLTAGE / CURRENT:

NORTH AMERICAN BLADE CONFIGURATION

MODEL NUMBER	OUTPUT VOLTAGE (VDC)	OUTPUT CURRENT (A)	RATED OUTPUT POWER (W)
GT-41076-0603-X.X	+3.0	0 - 2.0	0 - 6.0
GT-41076-0605-X.X	+5.0	0 - 1.2	0 - 6.0
GT-41076-0606-X.X	+6.0	0 - 1.0	0 - 6.0
GT-41076-0607-X.X	+7.0	0 - 0.85	0 - 6.0
GT-41076-0609-X.X	+9.0	0 - 0.66	0 - 6.0
GT-41076-0612-X.X	+12.0	0 - 0.5	0 - 6.0
GT-41076-0615-X.X	+15.0	0 - 0.4	0 - 6.0
GT-41076-0618-X.X	+18.0	0 - 0.33	0 - 6.0
GT-41076-0620-X.X	+20.0	0 - 0.30	0 - 6.0
GT-41076-0624-X.X	+24.0	0 - 0.25	0 - 6.0

SPECIFICATIONS MAY CHANGE WITHOUT PRIOR NOTICE. CONSULT GLOBTEK CUSTOMER SERVICE FOR LATEST SPECIFICATIONS.

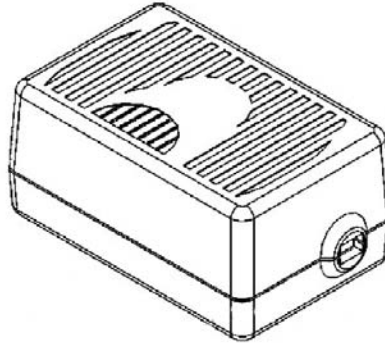
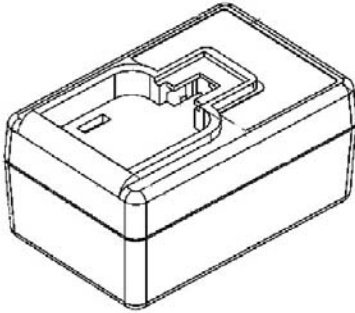


6 Watts, Wall Plug-In, Switchmode Power Supply, N.A., European, U.K., SAA Universal Input, ITE, Class II, Level V



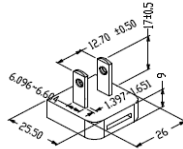
ENCLOSURES

MATERIAL: 94V-0 POLYCARBONATE
 COLOR: BLACK
 DIMENSIONS: 64 x 40.5 x 29mm +/- 1.0
 SYMBOLS CAN BE EITHER PAD PRINTED OR MOLDED IN THE CASE

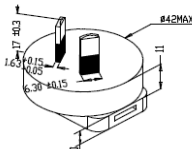


OUTPUT CORD AND CONNECTOR:

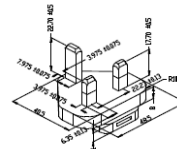
CABLE TYPE:
 1C + SHIELD UL 1185
CABLE LENGTH:
 (7V AND ABOVE)
 1830mm + 150 - 0
CABLE LENGTH: (5V-6.9V)
 1000mm + 150 - 0
WIRE GAUGE (AWG):
 18AWG
HANK DIMENSION:
 80 ± 10mm
CABLE / CONNECTOR:
 OVERMOLD COLOR: BLACK
FERRITE TYPE / DIMENSION:
 14.2 x 28.5 x 8.2
FERRITE # OF TURNS: 1
FERRITE DIMENSION FROM STRAIN RELIEF: 50mm +10
FERRITE DIMENSION FROM PLUG: N/A
PLUG TYPE:
 BARRELOVER
MOLD ORIENTATION:
 STRAIGHT
PLUG DIMENSIONS:
 5.5 x 2.5 x 11mm
BARREL PLUG INTERNAL SPRING CLIP: NO
BARREL PLUG LOCKING NOTCH: NO
POLARITY:
 CENTER POSITIVE
STRIP LENGTH: N/A
TIN LENGTH: N/A
ADDITIONAL REQUIREMENTS: N/A



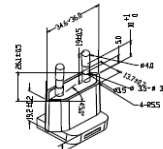
P/N Q-NA(R)
NORTH AMERICA
JAPAN



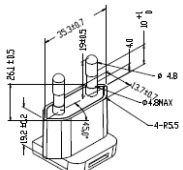
P/N Q-SAA(R)
AUSTRALIA



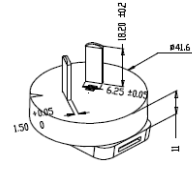
P/N Q-UK(R)
UNITED KINGDOM
HONG KONG
SINGAPORE



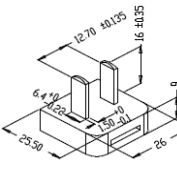
P/N Q-EU(R)
EUROPE
SOUTH AMERICA



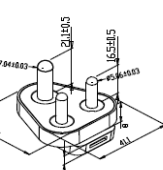
P/N Q-KR(R)
KOREA



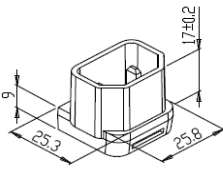
P/N Q-AR(R)
ARGENTINA






P/N Q-CN(R)
CHINA



P/N Q-IN(R)
SOUTH AFRICA



P/N Q-C18(R)
IEC 320 INLET CONNECTOR

GlobTek, Inc.
 ITE POWER SUPPLY (电源适配器)
 MODEL (型号): GT-41076-06W-V.X.X
 INPUT (输入): 100-240V-0.3A, 50-60Hz
 OUTPUT (输出): □ V --- □ A
LPS EFFICIENCY LEVEL

Part No (料号): 12345678901234567890
 MADE IN CHINA (中国制造) WWYY

