



Product Change Notice 2014.1.27

GlobTek announces the below referenced open frame power supply models printed circuit board color solder mask change. Subject models will be produced as originally provided with white or green color CEM-1 PCBs or alternatively a double sided red color CEM-1 PCB.

The only change is that the solder mask color will change to red on one side from green while adding a red layer to the alternate side which was previously white or brown.

Reference: GlobTek models GT-2065, GT(M)41060, GT-91115, GTM43007, GTM43200, GT(M)21096, GT-21096-1003FSG2458, GTA41077, GTM91120, GTM41080, GTM91099-60240001C, GTM41134

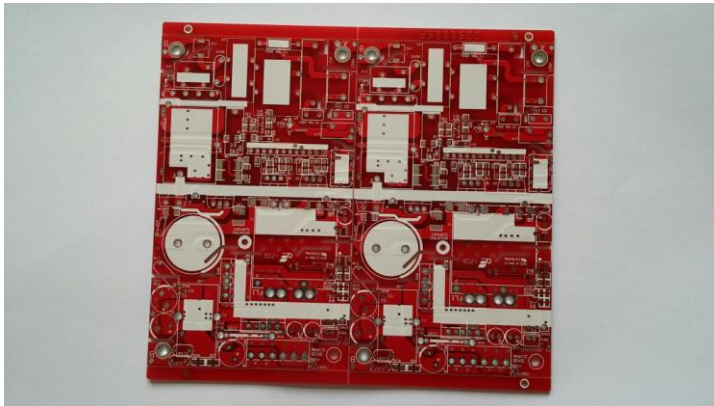
This PCN impacts various GlobTek models but is not limited to the models listed above.

Reason for Change: In response to feedback from the field and for marketing reasons, the PCB solder mask color shall change from color brown PCB to a more desirable color red.

Specification Notes:

1. Regulatory approvals are not impacted by this color and construction change.
2. PCB Material and copper traces stay the same.
3. GlobTek specifications do not reference the PCB color so no GlobTek specification update shall be required.
4. This change does not impact form, fit or function.

New PCB appearance:



Schedule for Implementation: Effective immediately the red PCB production will begin.

For any questions about this product change notice, please contact your GlobTek Sales Engineer at (201) 784-1000, visit our website at www.globtek.com or Email: sales@globtek.com.