



ISO 9001:2008
REGISTERED



**100-120 Watts, Desktop, Universal Input,
Single Output Family, Medical Switchmodes**

Part Number Ordering System (See Page 278)
Output Plug/Cord Options (See Page 247)



ELECTRICAL SPECIFICATIONS:

INPUT VOLTAGE:
100 VAC TO 240 VAC

INPUT CURRENT:
2A MAXIMUM

INPUT FREQUENCY:
47 HZ - 63 HZ

OUTPUT CURRENT:
NO MINIMUM LOAD CURRENT REQUIRED TO MAINTAIN REGULATION

OUTPUT POWER (RATED):
120 WATTS MAX

OUTPUT RIPPLE (PEAK TO PEAK):
LESS THAN 1% OF THE NOMINAL OUTPUT VOLTAGE

OUTPUT LOAD REGULATION:
± 5% MEASURED AT OUTPUT CONNECTOR

LINE REGULATION:
± 1% OUTPUT MEASURED AT OUTPUT CONNECTOR

TURN ON/ TURN OFF OVERSHOOT:
5% MAX 500uS MAX RECOVERY TIME FOR 25% STEP LOAD

TURN-ON DELAY:
1 SEC MAX

HOLD-UP TIME:
8mS MINIMUM AT 120VAC

INRUSH CURRENT:
40A MAXIMUM AT 120VAC AND 60A MAXIMUM AT 230VAC

EFFICIENCY:
80% TYPICAL

POWER FACTOR:
0.8 TYP, CURRENT SHAPER PFC FRONT STAGE

SWITCHING FREQUENCY:
100 KHZ TYPICAL

OVER-VOLTAGE PROTECTION:
OUTPUT LIMITED BETWEEN 130 TO 180% OF NOMINAL VOLTAGE, HICCUP MODE

OVER-CURRENT / SHORT CIRCUIT:
HICCUP MODE WITH AUTORECOVERY ONCE FAULT HAS BEEN REMOVED

OTHER PROTECTION:
DUAL FUSING, LINE AND NEUTRAL FOR MEDICAL GRADE AND LINE FUSING FOR ITE GRADE

SAFETY APPROVALS:
EN60601.1 AND UL60601.1, CB REPORT AND CE MARK, UL TO UL 60950-1, cUL TO CSA 60950-1, DEMKO TO EN60950-1, PSE TO J60950, CCC TO GB4943-2001, GB9254-1998, GB17625.1-2002



DIELECTRIC WITHSTAND VOLTAGE:
5656VDC (4000VAC) PRIMARY-SECONDARY;

LEAKAGE CURRENT:
≤ 300uA AT 240VAC

EMI:
COMPLIES WITH EN55011 AND EN55022, CLASS B AND FCC PART 15 CLASS B WHEN TESTED WITH A RESISTIVE LOAD, BOTH CONDUCTED AND RADIATED

CE MARK:
TESTED TO COMPLY WITH EN61000-3-2 EN61000-3-3, AND EN50082-1, INCLUDING EN61000-4-2, EN61000-4-3, EN61000-4-4, EN61000-4-5, EN61000-4-6, EN61000-4-11.

MTBF:
200K HRS, ROOM TEMPERATURE, GROUND BENIGN

OPERATING TEMPERATURE:
0° TO 40°C

STORAGE TEMPERATURE:
-40°C TO 85°C

HUMIDITY:
NON-CONDENSING; 5% TO 90% RH

MODEL NUMBER CODE:
GTM: INTERNAL CODE;
P: POWER FACTOR CORRECTION, OPTIONAL
10012 TO 12048: OUTPUT POWER / OUTPUT VOLTAGE
-: CLASS I PROTECTIVE GROUND OR W: CLASS II, DOUBLE INSULATED

- NOTES:**
- 1) THE MEDICAL VERSION IS DESIGNED NOT TO BE USED IN SYSTEM WITH DIRECT PATIENT CONTACT APPLICATIONS.
 - 2) SWITCHING FREQUENCY NOISE MEASUREMENT ARE MADE ACROSS A 20MHZ BANDWIDTH WITH 10UF TANTALUM CAPACITOR AND 0.1UF CERAMIC CAPACITOR CONNECTED AT THE OUTPUT CONNECTOR.
 - 3) CONDUCTED AND RADIATED EMI WHERE PERFORMED WITH RESISTIVE LOADS SET TO FULL LOAD, NOMINAL LINES.
 - 4) ALL MEASUREMENTS ARE PERFORMED AT 25C ROOM AMBIENT AND ARE TYPICAL.
 - 5) GLOBTEK PRODUCTS ARE NOT AUTHORIZED TO BE USED AS MISSION CRITICAL COMPONENTS IN LIFE SUPPORT HAZARDOUS ENVIRONMENT, NUCLEAR OR AIRCRAFT APPLICATION WITHOUT PRIOR WRITTEN APPROVAL FROM THE CEO OF GLOBTEK INC.
 - 6) CONTENTS OF THIS DOCUMENTS ARE SUBJECT TO CHANGE WITHOUT PRIOR NOTICE.

**OUTPUT VOLTAGE / CURRENT:
CLASS I MODELS, PROTECTIVE GROUND**

MODEL NUMBER	OUTPUT VOLTAGE (VDC)	OUTPUT CURRENT (A)	RATED OUTPUT POWER (W)
GTM9100P10012-X.X	+12.0	0 - 8.34	0 - 100
GTM9100P10013.5-X.X	+13.50	0 - 7.41	0 - 100
GTM9100P10013.8-X.X	+13.80	0 - 7.25	0 - 100
GTM9100P10015-X.X	+15.0	0 - 6.67	0 - 100
GTM9100P10018-X.X	+18.0	0 - 5.50	0 - 100
GTM9100P10019-X.X	+19.0	0 - 5.26	0 - 100
GTM9100P10020-X.X	+20.0	0 - 5.00	0 - 100
GT-9100P10022-X.X	+22.0	0 - 4.54	0 - 100
GTM9100P12024-X.X	+24.0	0 - 4.20	0 - 120
GTM9100P12036-X.X	+36.0	0 - 3.33	0 - 120
GTM9100P-12048-X.X	+48.0	0 - 2.50	0 - 120

SPECIFICATIONS MAY CHANGE WITHOUT PRIOR NOTICE. CONSULT GLOBTEK CUSTOMER SERVICE FOR LATEST SPECIFICATIONS.



ISO 9001:2008 REGISTERED

100-120 Watts, Desktop, Universal Input, Single Output Family, Medical Switchmodes

Part Number Ordering System (See Page 278)
Output Plug/Cord Options (See Page 247)



ENCLOSURES

UPPER HOUSING: HIGH IMPACT PLASTIC, 94V0 POLYCARBONATE, NON-VENTED, COLOR BLACK
LOWER HOUSING: HIGH IMPACT PLASTIC 94V0 POLYCARBONATE, NON- VENTED, COLOR BLACK



SIZE:

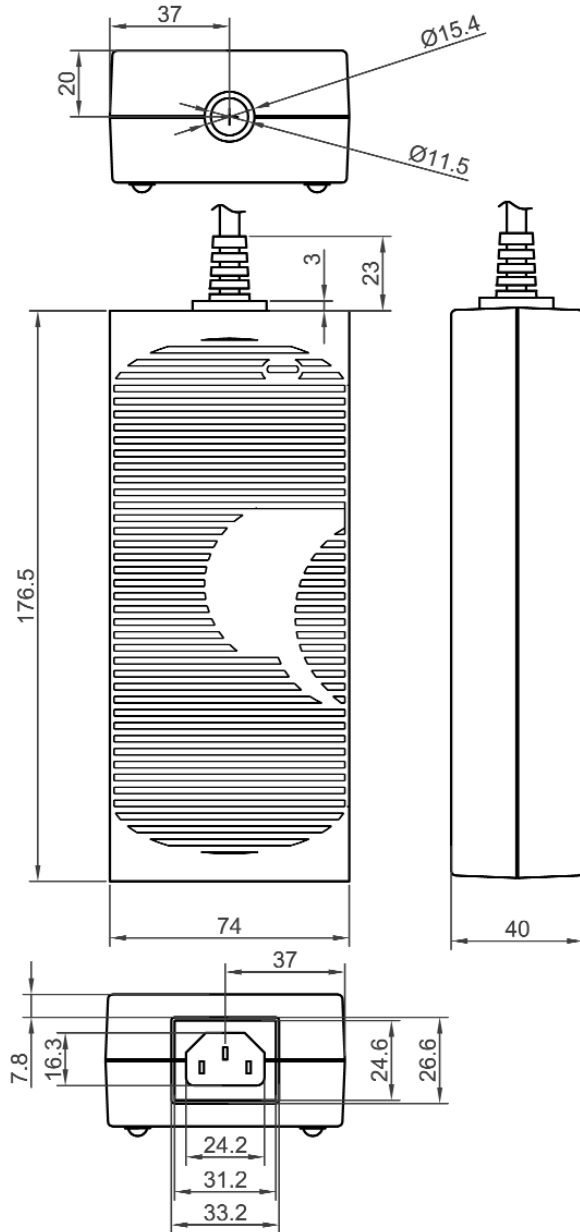
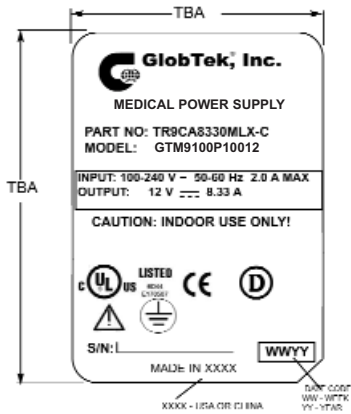
176.5 x 74 x 40 + 1 mm

INPUT CONNECTOR:

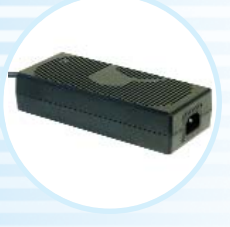
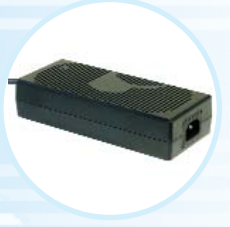
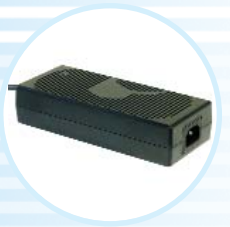
CONFIGURATION:

CLASS 1 MODEL IEC60320 / C14,
AC POWER RECEPTACLE WITH 3
MALE PINS. GROUND PIN
CONNECTED INTERNALLY TO DC

INDICATOR:
GREEN LED,
OUTPUT
PRESENT



NOTE: FOR OTHER OUTPUT CORDS ARRANGEMENTS, SEE OUTPUT PLUG/CORD OPTIONS CATALOG ACCESSORIES.



SPECIFICATIONS MAY CHANGE WITHOUT PRIOR NOTICE. CONSULT GLOBTEK CUSTOMER SERVICE FOR LATEST SPECIFICATIONS.