



ISO 9001:2008  
REGISTERED



**100-120 Watts, Desktop, Universal Input,  
Single Output Family, ITE Switchmodes**

Part Number Ordering System (See Page 278)  
Output Plug/Cord Options (See Page 247)  
Medical Versions (See Page 144)



INDOOR USE ONLY



**ELECTRICAL SPECIFICATIONS:**

**INPUT VOLTAGE:**  
100 VAC TO 240 VAC

**INPUT CURRENT:**  
2A MAXIMUM

**INPUT FREQUENCY:**  
47 HZ - 63 HZ

**OUTPUT CURRENT:**  
NO MINIMUM LOAD CURRENT REQUIRED TO MAINTAIN REGULATION

**OUTPUT POWER (RATED):**  
120 WATTS MAX

**OUTPUT RIPPLE (PEAK TO PEAK):**  
LESS THAN 1% OF THE NOMINAL OUTPUT VOLTAGE

**OUTPUT LOAD REGULATION:**  
± 5% MEASURED AT OUTPUT CONNECTOR

**LINE REGULATION:**  
± 1% OUTPUT MEASURED AT OUTPUT CONNECTOR

**TURN ON/ TURN OFF OVERTHOOT:**  
5% MAX 500uS MAX RECOVERY TIME FOR 25% STEP LOAD

**TURN-ON DELAY:**  
1 SEC MAX

**HOLD-UP TIME:**  
8mS MINIMUM AT 120VAC

**INRUSH CURRENT:**  
40A MAXIMUM AT 120VAC AND 60A MAXIMUM AT 230VAC

**EFFICIENCY:**  
80% TYPICAL

**POWER FACTOR:**  
0.8 TYP, CURRENT SHAPER PFC FRONT STAGE

**SWITCHING FREQUENCY:**  
100 KHZ TYPICAL

**OVER-VOLTAGE PROTECTION:**  
OUTPUT LIMITED BETWEEN 130 TO 180% OF NOMINAL VOLTAGE, HICCUP MODE

**OVER-CURRENT / SHORT CIRCUIT:**  
HICCUP MODE WITH AUTORECOVERY ONCE FAULT HAS BEEN REMOVED

**OTHER PROTECTION:**  
DUAL FUSING, LINE AND NEUTRAL FOR MEDICAL GRADE AND LINE FUSING FOR ITE GRADE

**SAFETY APPROVALS:**  
EN60601.1 AND UL60601.1, CB REPORT AND CE MARK, UL TO UL 60950-1, cUL TO CSA 60950-1, DEMKO TO EN60950-1, PSE TO J60950, CCC TO GB4943-2001, GB9254-1998, GB17625.1-2002

**DIELECTRIC WITHSTAND VOLTAGE:**  
5656VDC (4000VAC) PRIMARY-SECONDARY;

**LEAKAGE CURRENT:**  
≤ 300uA AT 240VAC

**EMI:**  
COMPLIES WITH EN55011 AND EN55022, CLASS B AND FCC PART 15 CLASS B WHEN TESTED WITH A RESISTIVE LOAD, BOTH CONDUCTED AND RADIATED

**CE MARK:**  
TESTED TO COMPLY WITH EN61000-3-2 EN61000-3-3, AND EN50082-1, INCLUDING EN61000-4-2, EN61000-4-3, EN61000-4-4, EN61000-4-5, EN61000-4-6, EN61000-4-11.

**MTBF:**  
200K HRS, ROOM TEMPERATURE, GROUND BENIGN

**OPERATING TEMPERATURE:**  
0° TO 40°C

**STORAGE TEMPERATURE:**  
-40°C TO 85°C

**HUMIDITY:**  
NON-CONDENSING; 5% TO 90% RH

**MODEL NUMBER CODE:**  
GTM: INTERNAL CODE;  
P: POWER FACTOR CORRECTION, OPTIONAL  
10012 TO 12048: OUTPUT POWER / OUTPUT VOLTAGE  
-: CLASS I PROTECTIVE GROUND OR W: CLASS II, DOUBLE INSULATED

- NOTES:**
- 1) THE MEDICAL VERSION IS DESIGNED NOT TO BE USED IN SYSTEM WITH DIRECT PATIENT CONTACT APPLICATIONS.
  - 2) SWITCHING FREQUENCY NOISE MEASUREMENT ARE MADE ACROSS A 20MHZ BANDWIDTH WITH 10UF TANTALUM CAPACITOR AND 0.1UF CERAMIC CAPACITOR CONNECTED AT THE OUTPUT CONNECTOR.
  - 3) CONDUCTED AND RADIATED EMI WHERE PERFORMED WITH RESISTIVE LOADS SET TO FULL LOAD, NOMINAL LINES.
  - 4) ALL MEASUREMENTS ARE PERFORMED AT 25C ROOM AMBIENT AND ARE TYPICAL.
  - 5) GLOBTEK PRODUCTS ARE NOT AUTHORIZED TO BE USED AS MISSION CRITICAL COMPONENTS IN LIFE SUPPORT HAZARDOUS ENVIRONMENT, NUCLEAR OR AIRCRAFT APPLICATION WITHOUT PRIOR WRITTEN APPROVAL FROM THE CEO OF GLOBTEK INC.
  - 6) CONTENTS OF THIS DOCUMENTS ARE SUBJECT TO CHANGE WITHOUT PRIOR NOTICE.

**OUTPUT VOLTAGE / CURRENT:  
CLASS I MODELS, PROTECTIVE GROUND**

MODEL NUMBER	OUTPUT VOLTAGE (VDC)	OUTPUT CURRENT (A)	RATED OUTPUT POWER (W)
GT-9100P10012-X.X	+12.0	0 - 8.34	0 - 100
GT-9100P10013.5-X.X	+13.50	0 - 7.41	0 - 100
GT-9100P10013.8-X.X	+13.80	0 - 7.25	0 - 100
GT-9100P10015-X.X	+15.0	0 - 6.67	0 - 100
GT-9100P10018-X.X	+18.0	0 - 5.50	0 - 100
GT-9100P10019-X.X	+19.0	0 - 5.26	0 - 100
GT-9100P10020-X.X	+20.0	0 - 5.00	0 - 100
GT-9100P10022-X.X	+22.0	0 - 4.54	0 - 100
GT-9100P12024-X.X	+24.0	0 - 4.20	0 - 120
GT-9100P12036-X.X	+36.0	0 - 3.33	0 - 120
GT-9100P-12048-X.X	+48.0	0 - 2.50	0 - 120

SPECIFICATIONS MAY CHANGE WITHOUT PRIOR NOTICE. CONSULT GLOBTEK CUSTOMER SERVICE FOR LATEST SPECIFICATIONS.



ISO 9001:2008 REGISTERED

100-120 Watts, Desktop, Universal Input, Single Output Family, ITE Switchmodes

Part Number Ordering System (See Page 278)  
Output Plug/Cord Options (See Page 247)  
Medical Versions (See Page 144)



ENCLOSURES

UPPER HOUSING: HIGH IMPACT PLASTIC, 94V0 POLYCARBONATE, NON-VENTED, COLOR BLACK  
LOWER HOUSING: HIGH IMPACT PLASTIC 94V0 POLYCARBONATE, NON- VENTED, COLOR BLACK



SIZE:

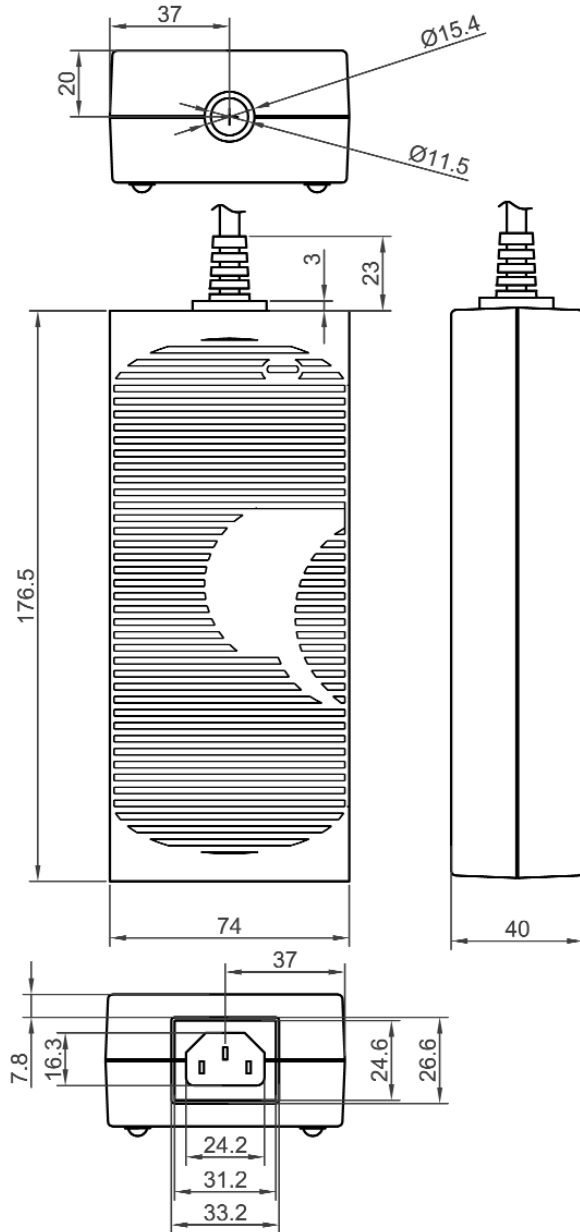
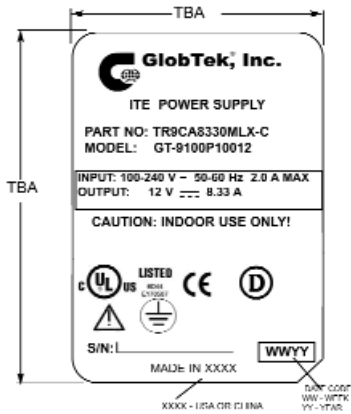
176.5 x 74 x 40 + 1 mm

INPUT CONNECTOR:

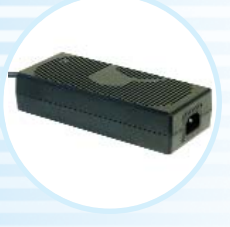
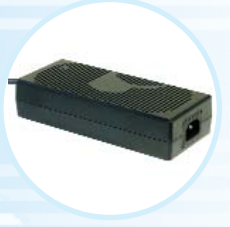
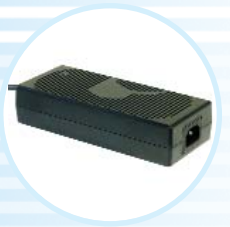
CONFIGURATION:

CLASS 1 MODEL IEC60320 / C14,  
AC POWER RECEPTACLE WITH 3  
MALE PINS. GROUND PIN  
CONNECTED INTERNALLY TO DC

INDICATOR:  
GREEN LED,  
OUTPUT  
PRESENT



NOTE: FOR OTHER OUTPUT CORDS ARRANGEMENTS, SEE OUTPUT PLUG/CORD OPTIONS CATALOG ACCESSORIES.



SPECIFICATIONS MAY CHANGE WITHOUT PRIOR NOTICE. CONSULT GLOBTEK CUSTOMER SERVICE FOR LATEST SPECIFICATIONS.