



ISO 9001:2000  
REGISTERED



**0-15 Watts, Switchmode, Single Output, 5V@ 3A (2.2"x3.9")  
Open Frame, Universal Input, ITE Class I**

Part Number Ordering System (See Page 224)



**ELECTRICAL SPECIFICATIONS:**

**INPUT VOLTAGE:**  
90 VAC TO 264 VAC

**INPUT CURRENT:**  
< 0.5 A RMS AT 90 VAC INPUT

**INPUT FREQUENCY:**  
47 HZ - 63 HZ

**OUTPUT VOLTAGE:**  
+ 5VDC @ 0-3.0A

**OUTPUT CURRENT:**  
NO MINIMUM LOAD REQUIRED

**OUTPUT POWER (RATED):**  
15 WATTS MAX

**OUTPUT RIPPLE (PEAK TO PEAK):**  
≤ 1% TYP

**OUTPUT REGULATION (LINE/LOAD):**  
± 2 % FOR MAIN OUTPUT, MEASURED AT O/P CONNECTOR

**LINE REGULATION:**  
± 0.5 % MAX AT FULL LOAD

**ADJUSTABILITY:**  
+10, -5% OUTPUT VOLTAGE

**REMOTE SENSING (OPTION):**  
PROVIDES REGULATION WITHIN ± 1% OF NOMINAL VOLTAGE OF MAIN OUTPUT AT LOAD LEVEL. FOR 3.3V SINGLE OUTPUT, REMOTE IS REQUIRED.

**TURN ON/ TURN OFF OVERSHOOT:**  
4% MAX 500uS MAX RECOVERY TIME FOR 25% STEP LOAD

**TURN-ON DELAY:**  
1 SEC MAX

**HOLD-UP TIME:**  
16 m SEC MIN AT NOMINAL INPUT AND FULL LOAD

**INRUSH CURRENT:**  
20 A MAX AT COLD START FOR N.A. (40A FOR EURO)

**EFFICIENCY:**  
75 % TYPICAL

**SWITCHING FREQUENCY:**  
100 KHZ TYPICAL

**OVER-VOLTAGE PROTECTION:**  
VOLTAGE LIMITED LESS 130% OF NOMINAL VOLTAGE

**OVER-CURRENT / SHORT CIRCUIT:**  
HICCUP WITH AUTO RECOVERY TO 1.1 - 1.3 IO

**OTHER PROTECTION:**  
INPUT FUSING

**SAFETY APPROVALS:**  
UR TO UL 60950, C-UR TO 22.2 # 950, TUV TO EN 60950, CE CLASS I & II

**DIELECTRIC WITHSTAND VOLTAGE:**  
4242VDC (3000 VAC) PRIMARY-SECONDARY;1500 VAC  
PRIMARY- GROUND

**LEAKAGE CURRENT:**  
≤ 0.25 mA

**LINE SURGE:**  
EN 61000-4-5 LEVEL 4

**EMI:**  
COMPLIES WITH EN55022, CLASS B AND FCC PART 15 CLASS B WHEN TESTED WITH A RESISTIVE LOAD, BOTH CONDUCTED AND RADIATED

**CE MARK:**  
TESTED TO COMPLY WITH EN61000-3-2 EN61000-3-3, AND EN50082-1, INCLUDING EN61000-4-2 (SYSTEM LEVEL), EN61000-4-3, EN61000-4-4, EN61000-4-5, EN61000-4-6, EN61000-4-11, LEVEL 4.

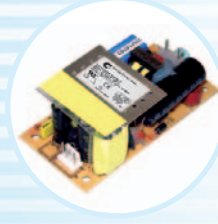
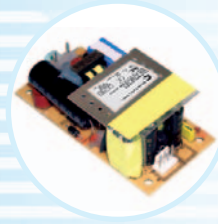
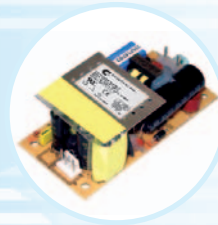
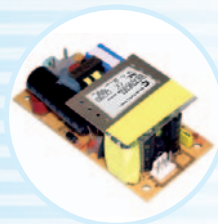
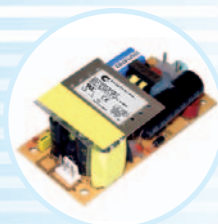
**MTBF:**  
GREATER THAN 50,000 HOURS AT 25°C AMBIENT TEMPERATURE

**OPERATING TEMPERATURE:**  
0° C TO 40° C

**STORAGE TEMPERATURE:**  
-40° C TO 80° C

**HUMIDITY:**  
0% TO 90% RELATIVE HUMIDITY

**NOTES:**



**OUTPUT VOLTAGE / CURRENT:**

MODEL NUMBER	OUTPUT VOLTAGE (VDC)	OUTPUT CURRENT (mA)	RATED OUTPUT POWER (W)
GT-21098-1505	+ 5.0	0 - 3.0	0 - 15

SPECIFICATIONS MAY CHANGE WITHOUT PRIOR NOTICE. CONSULT GLOBTEK CUSTOMER SERVICE FOR LATEST SPECIFICATIONS.

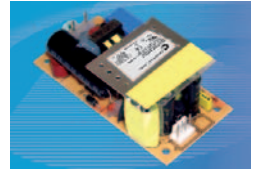


ISO 9001:2000  
REGISTERED

## GT-21098 SERIES 15W

**0-15 Watts, Switchmode, Single Output, 5V@ 3A (2.2"x3.9")**  
**Open Frame, Universal Input, ITE Class I**

Part Number Ordering System (See Page 224)



FOR INDOOR USE ONLY



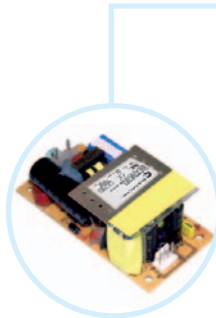
### MECHANICAL CONFIGURATION:

#### INPUT CONNECTOR:

SQUARE PIN LOCKING HEADERS, WITH .312(7.92) BETWEEN CONDUCTORS, .045 (1.14) SQUARE PINS, TIN PLATED UL 94V-0 RATED NYLON HOUSING, MOLEX: 09-65-2038 ( 3 CIRCUITS, WITH 1 PIN REMOVED FOR CLASS II). HEADER MATES WITH MOLEX NO. 2139 CONNECTOR OR EQUIVALENTS.

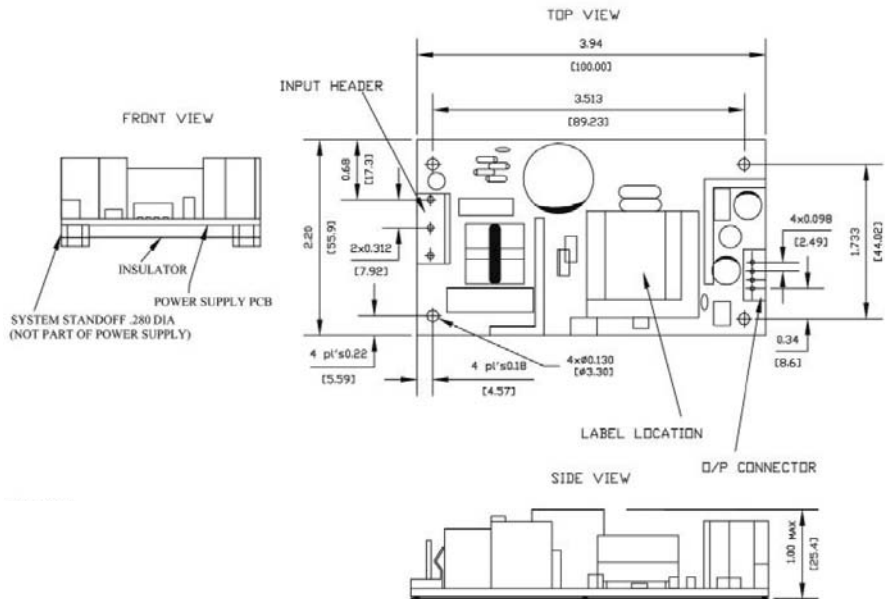
#### OUTPUT CONNECTOR:

4 PIN STRAIGHT SQUARE PIN FRICTION LOCK HEADER, MOLEX: 22-28-0040 UL 94V-0 RATED NYLON HOUSING; .100 (2.54) BETWEEN CONDUCTORS, .025(0.64) SQUARE PINS, TIN PLATED, HEADER MATCH WITH MOLEX # 2695 CONNECTORS OR EQUIVALENT.



#### OPTION:

10 MIL 94V-0 FIBER GLASS (2.17 X 3.90) INCH, W/4HOLES MATCHING MOUNTING HOLE POSITIONS, TERMINAL BOARD WITH RTV UNDERNEATH THE POWER PC BOARD IN 6 PLACES.



SPECIFICATIONS MAY CHANGE WITHOUT PRIOR NOTICE. CONSULT GLOBTEK CUSTOMER SERVICE FOR LATEST SPECIFICATIONS.