



ISO 9001:2008  
REGISTERED

GT-51084-12N12



**US/Euro Desktop, Linear Regulated Power Supply**  
**Dual 6 W, +12V DC @ 0.25A, -12V DC @ 0.25A**



**ELECTRICAL SPECIFICATIONS:**

**INPUT VOLTAGE:**  
120 / 230 VAC (SWITCH SELECTABLE)

**INPUT CURRENT:**  
0.95 A / 1.05 A MAX

**INPUT FREQUENCY:**  
60 / 50 HZ

**OUTPUT VOLTAGE/CURRENT:**  
+12.0 V@0.25A, -12.0 V@0.25A

**OUTPUT REGULATION:**  
+/- 5% MEASURED AT THE OUTPUT CONNECTOR

**LINE VOLTAGE REGULATION:**  
+/- 1% TYPICAL MEASURED AT FULL LOAD

**OUTPUT POWER (RATED):**  
6 WATTS MAX

**OUTPUT INDICATOR:**  
GREEN LED FOR OUTPUT PRESENT

**OVERLOAD/SHORT CIRCUIT PROTECTION:**  
INPUT LINE FUSING, CURRENT LIMITING, THERMAL

**SAFETY APPROVALS:**  
cUL, CE

**DIELECTRIC WITHSTAND VOLTAGE:**  
3000VAC PRIMARY-SECONDARY

**EMI:**  
EN55022 CLASS B WHEN TESTED WITH A RESISTIVE LOAD,  
BOTH CONDUCTED AND RADIATED

**MTBF:**  
200,000 HOURS AT 25°C AMBIENT TEMPERATURE

**OPERATING TEMPERATURE:**  
0°C TO 40° C

**TEMPERATURE RISE:**  
≤ 70° C FOR RATED LOAD.

**STORAGE TEMPERATURE:**  
-20°C TO 80° C

**HUMIDITY:**  
0% TO 90% RELATIVE HUMIDITY

**WEIGHT:**  
0.4 KG APPX

**RoHS:**  
COMPLIES WITH EU 2002/95/EC AND CHINA SJ/T 11363-2006

**OUTPUT VOLTAGE / CURRENT:**

MODEL NUMBER	OUTPUT VOLTAGE (VDC)	OUTPUT CURRENT (A)	RATED OUTPUT POWER (W)
GT-51084-12N12	+12/-12	+0.25/-0.25	0 - 6
GT-51084-15N125	+15/-15	+0.20/-0.20	0 - 6
GT-51084-18N18	+18/-18	+0.167/-0.167	0 - 6
GT-51084-24N24	+24/-24	+0.125/-0.125	0 - 6
GT-51084-36N36	+36/-36	+0.83/-0.83	0 - 6
GT-51084-48N48	+48/-48	+0.62/-0.62	0 - 6

SPECIFICATIONS MAY CHANGE WITHOUT PRIOR NOTICE. CONSULT GLOBTEK CUSTOMER SERVICE FOR LATEST SPECIFICATIONS.



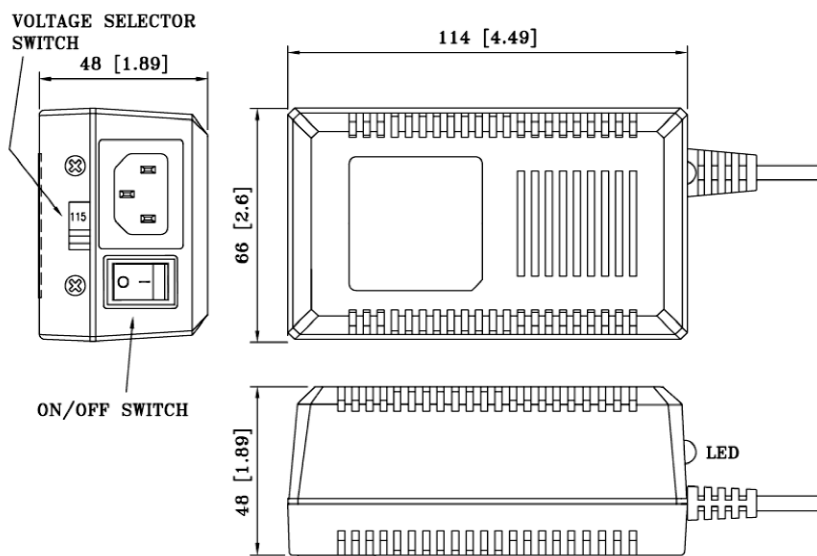
**US/Euro Desktop, Linear Regulated Power Supply**  
**Dual 6 W, +12V DC @ 0.25A, -12V DC @ 0.25A**



ISO 9001:2008  
REGISTERED

## ENCLOSURE

UPPER HOUSING: HIGH IMPACT PLASTIC, 94V0 POLYCARBONATE, NON-VENTED, COLOR BLACK, WITH ON/OFF SWITCH  
 LOWER HOUSING: HIGH IMPACT PLASTIC 94V0 POLYCARBONATE, NON- VENTED, COLOR BLACK, WITH NON-SLIP RUBBER FEET  
 SIZE: 114 x 66 x 48 ± 1 mm



### INPUT CONNECTOR:

CONFIGURATION:  
 MODEL IEC320 / C14, AC  
 POWER RECEPTACLE WITH  
 3 MALE PRONGS.  
 3 CONDUCTORS, ROUND UL  
 TYPE: AWM 2661, 22 AWG PVC,  
 OD=4.8 mm, PUR TYPE  
 HOLOGEN FREE CABLE,  
 COLOR BLACK, COLOR BLACK,

LENGTH (L) OF CORD:

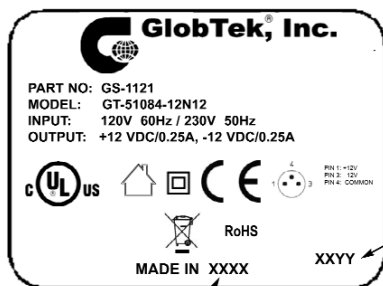
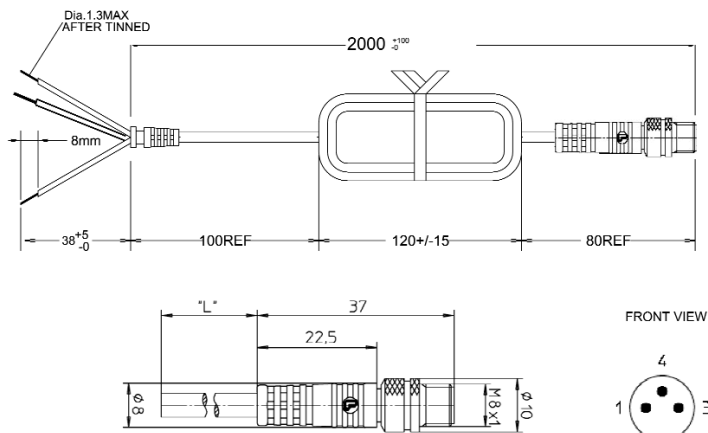
2000 + 100, - 0 mm.

CORD IS MEASURED FROM  
 THE HOUSING TO THE END  
 OF OVERMOLD OF THE  
 CONNECTOR.

CABLE IS TO BE MARKED  
 WITH WIRE GAUGE, AND ALL  
 APPLICABLE RATING AND  
 SAFETY APPROVALS.

### OUTPUT CONNECTOR:

LUMBERG RSMV3-657/2M  
 MALE CONNECTOR



SPECIFICATIONS MAY CHANGE WITHOUT PRIOR NOTICE. CONSULT GLOBTEK CUSTOMER SERVICE FOR LATEST SPECIFICATIONS.